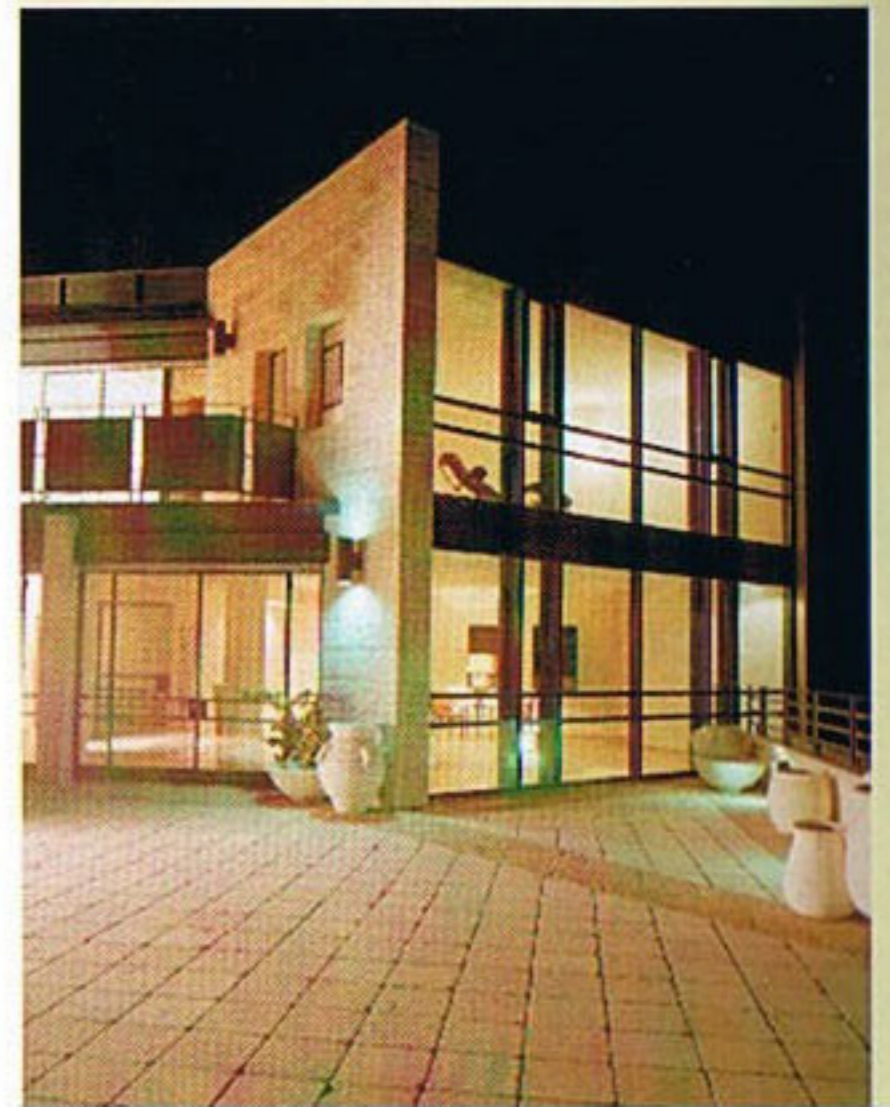


**JERUSALEM'S
MOST
BEAUTIFUL
LOCATION**

24 ASSAEL ST.



ABU-TOR

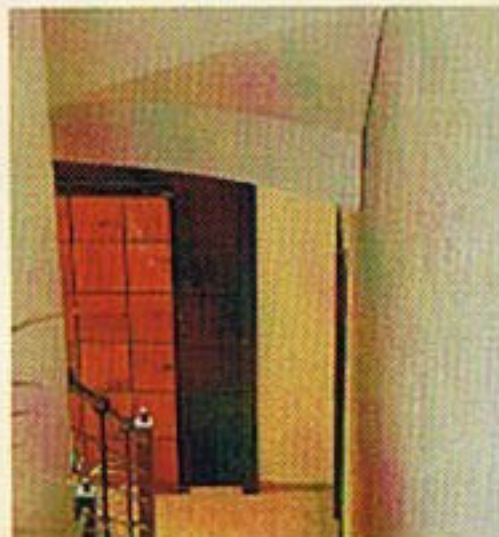
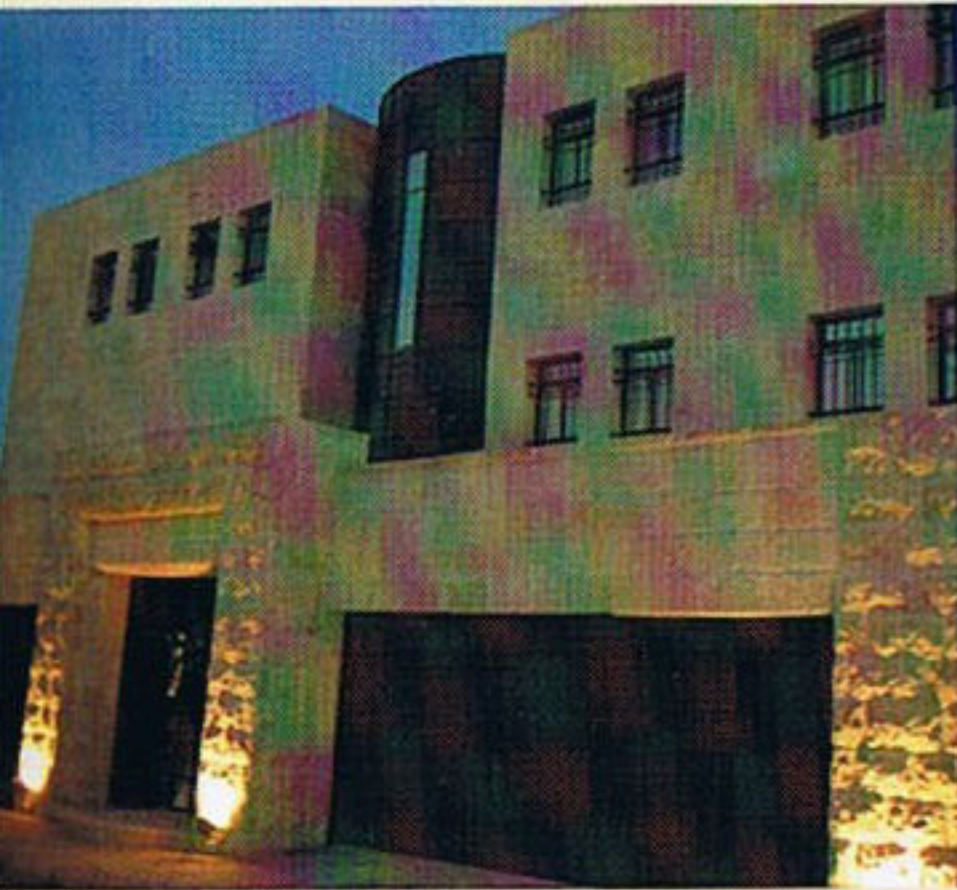




From every window you will discover a different story of Jerusalem, a city that changes its colors according to the time of day, as the light caresses the stones.

The panorama is one of a kind in its powerfulness and gentleness.

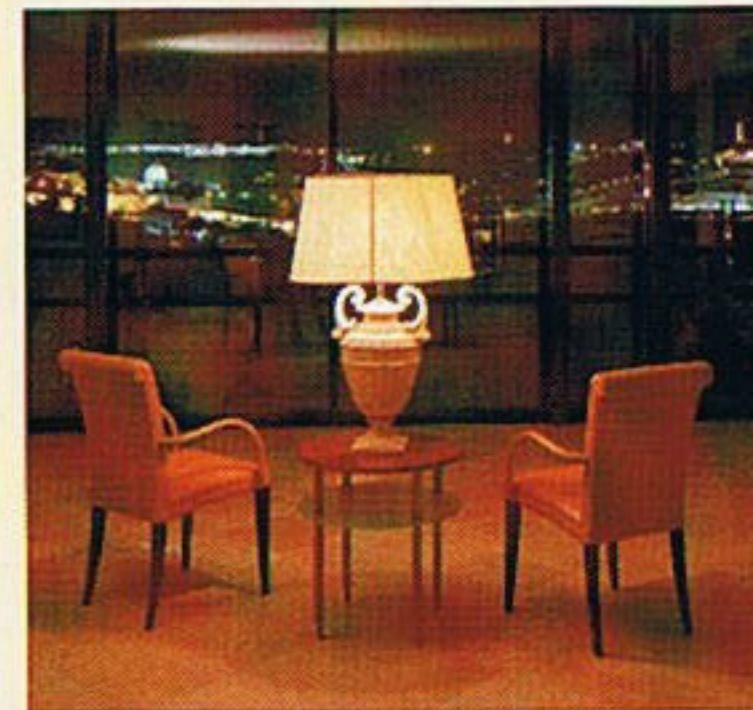
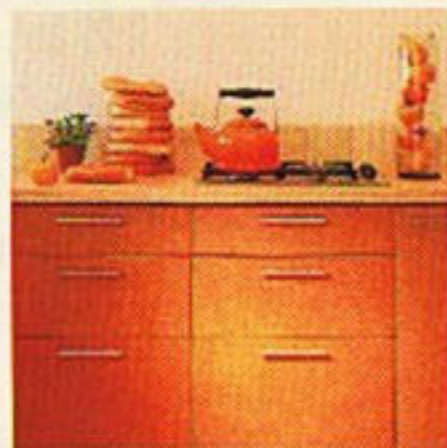
The breathtaking uninterrupted view includes the High Commissioner's Residence, the enchanting Sherover Promenade, the beginnings of the Judean Desert, the mountains of Edom and Moab, the City of David, the Mount of Olives, Mount Scopus, the Old City with its domes and mosques, Mount Zion, Bak'a, Talbieh and Rehavia, the German Colony and Yemin Moshe with





And the interior planning that creates a flow with the scenery, huge windows, space and intimacy. Enormous balconies. Building that is on the highest standard, a rich texture of intermingling materials: stone, wood, marble, glass and iron.

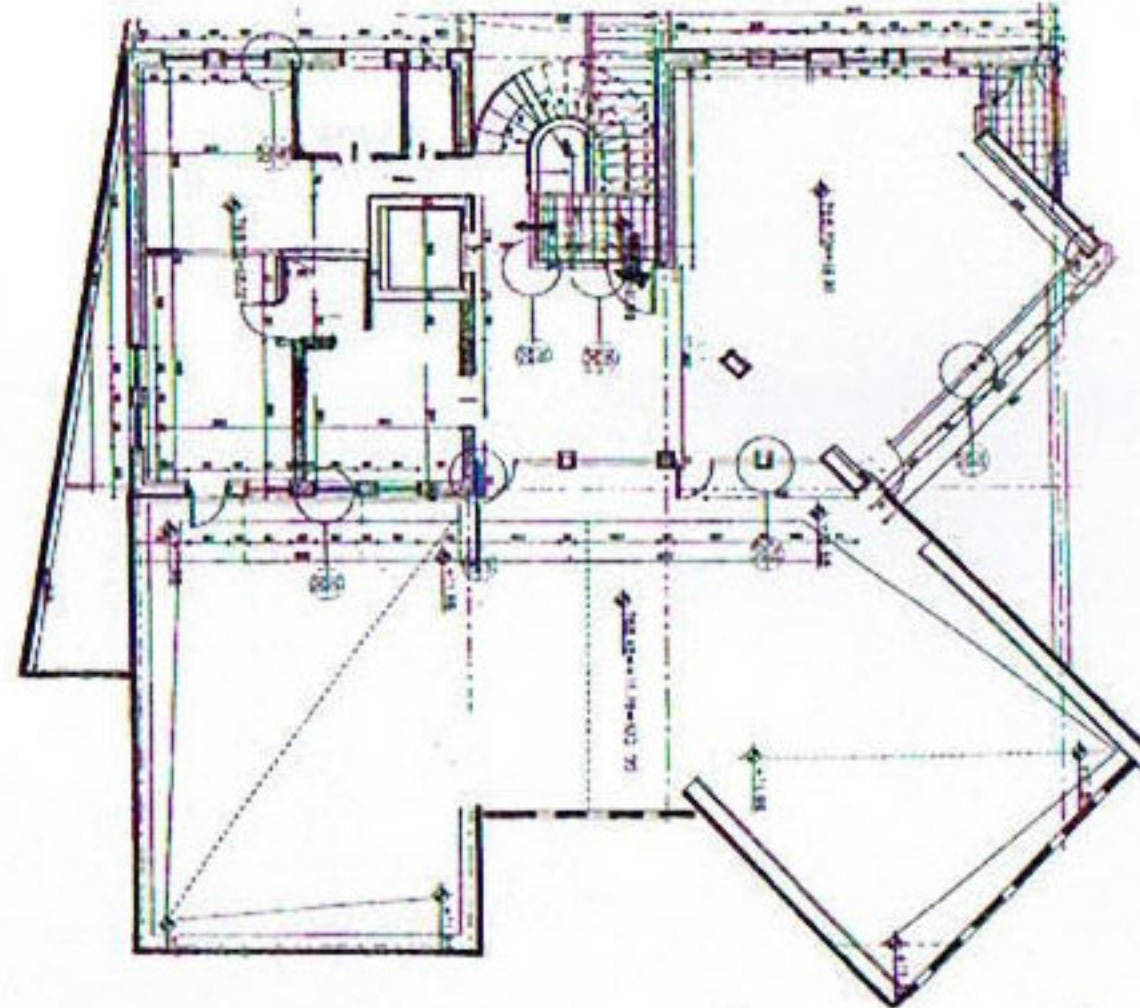
Paneled and tiled in Jerusalem stone, crafted in the ancient method, cut by hand. Solar and gas heating. Electric shutters, an elevator from the parking area directly to the two residential floors. Air conditioning, ventilation, communications and door and window systems enabling thermal and acoustic insulation.



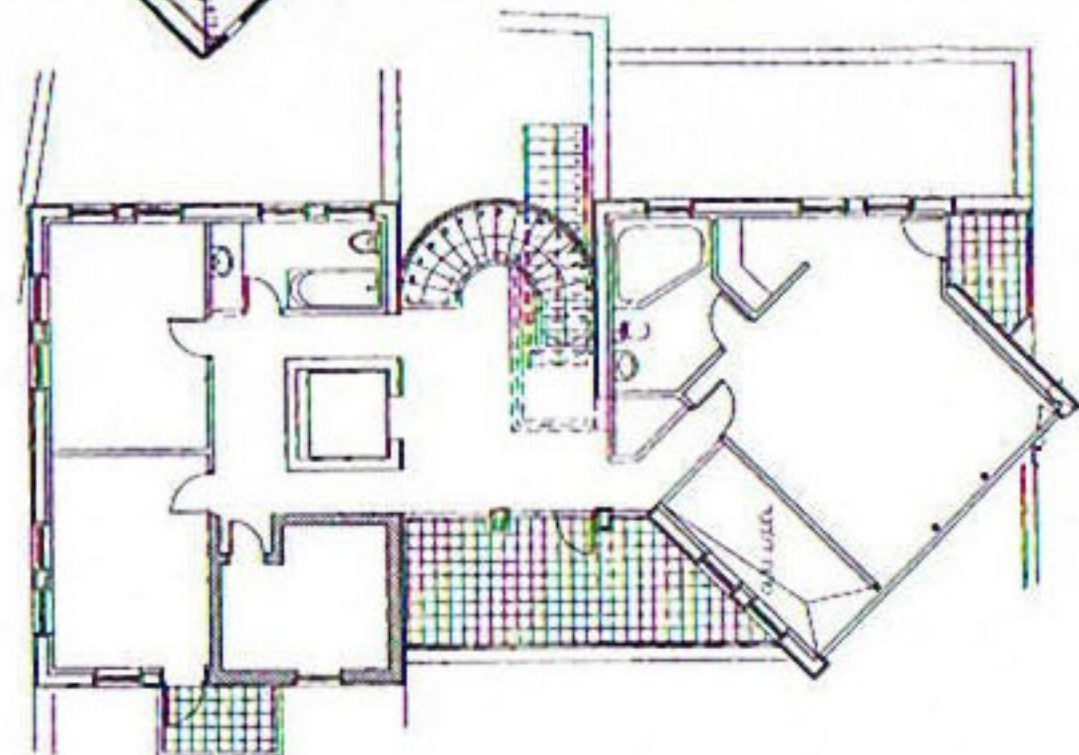


SPECIFICATIONS & APARTMENT PLANS

FIRST FLOOR



SECOND FLOOR



- Elegant entrance hall
- 5 bedrooms
- large living/dining area
- 3 balconies
- Study
- Kitchen
- 3 baths
- 3 toilets
- Laundry and utility room
- Possible staff accommodations
- Possible sauna and gym
- Covered parking

Total area 550 sq.m.

