



A New School
Building for the
Neve Shalom ~
Wahat al-Salam
Children's
Educational
Framework



C o n t a c t s



The Public Relations Office
Neve Shalom/Wahat al-Salam
99761 Doar Na Shimshon, Israel



pr@nswas.com



+ 972 (0)2 9915621



+ 972 (0)2 9911072

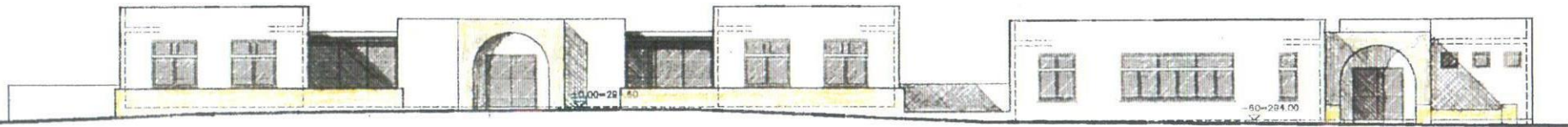
A New School Building for the Neve Shalom ~ Wahat al-Salam Children's Educational Framework

The Neve Shalom ~ Wahat al-Salam (NS/WAS) Nursery, Kindergarten and Primary School is the only comprehensive bilingual educational framework for Jews and Palestinians in Israel. The goal of the NS/WAS School is to create a place for Jewish – Arab bilingual education in Israel. In the current 2002-2003 school year, 278 children from 28 different communities attend the NS/WAS pre-school and primary school. Over the years, the teaching staff has struggled with many questions regarding Jewish – Arab education and there is a growing demand in the country to learn from this experience. Having established a precedent in the field, the NS/WAS school system now finds itself contributing to the development of other Jewish – Arab bilingual educational initiatives in the country as well.

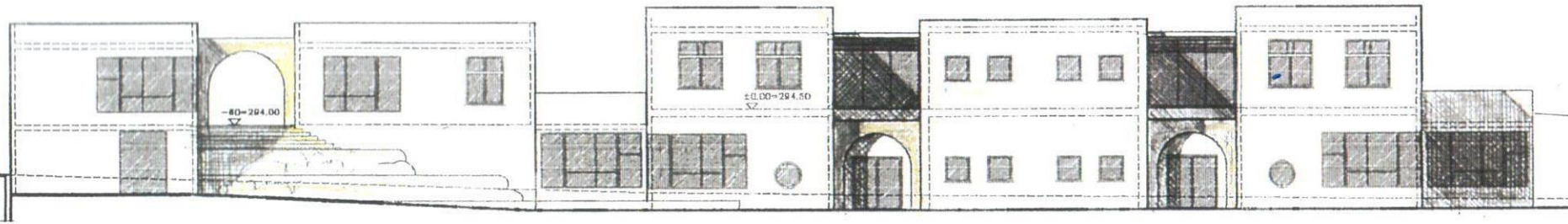
The Neve Shalom ~ Wahat al-Salam School has succeeded despite very limited resources and difficult physical conditions. The main school building long ago ceased to be large enough to serve the school, and now depends upon seven external temporary structures – an arrangement that is in various ways unsuitable. In the hot months, these buildings require a high expenditure in energy in order to cool them. In the winter, children must walk around in the rain between classes. The school also lacks facilities such as a proper teacher's room (currently the school's bomb shelter is used), offices, nurse's room, and sufficient toilets, etc.

The new school building will serve the school's current needs and provide for additional growth. It will afford a solution for the facilities which the school currently lacks, and provide new classrooms and workshop rooms. Since we see our educational system as an integrated whole, the new building will serve the kindergarten and early grade levels, and free the existing school building to serve the higher primary school levels.

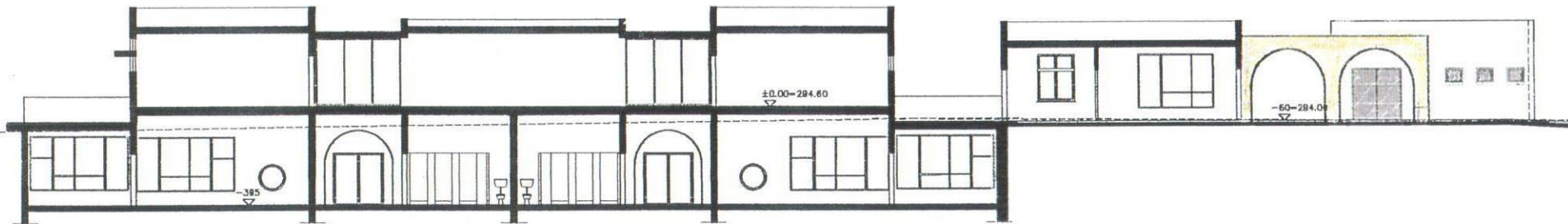
The new building will also provide suitable facilities to train teachers and develop curriculum – a long-term goal of the school is to nurture and promote Jewish – Arab bilingual education methods that can be adopted in other Israeli schools.



North Elevation 1:250



South Elevation 1:250



Section 2-2 1:250